

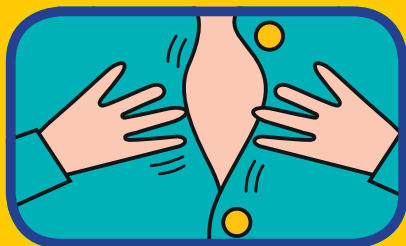
# First Aid for Focal Impaired Awareness (Complex Partial) Seizures

Non-convulsive seizures in which awareness is affected but consciousness is not lost

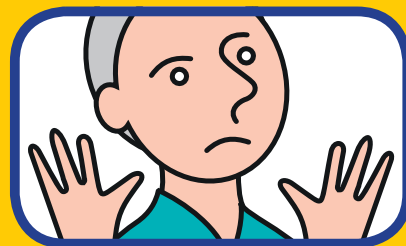
## KNOW THE SIGNS



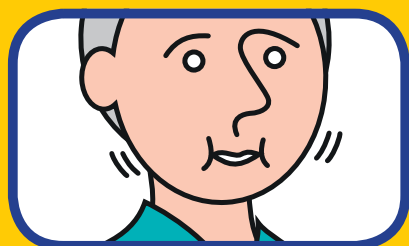
Wandering aimlessly



Fidgeting with clothing



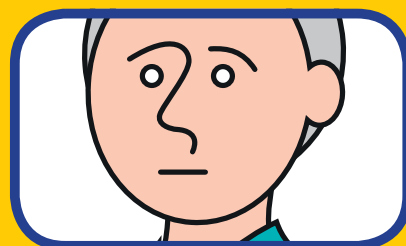
Agitated behaviour



Chewing & smacking of lips

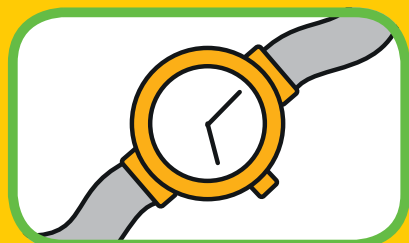


Confused or slurred speech



Staring trance-like

## KNOW WHAT TO DO



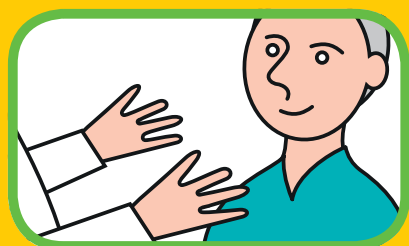
DO time the seizure



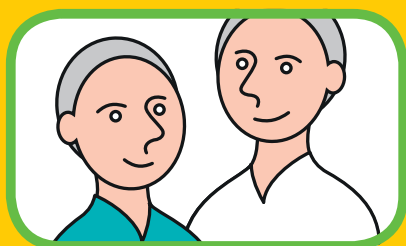
DON'T restrain or grab



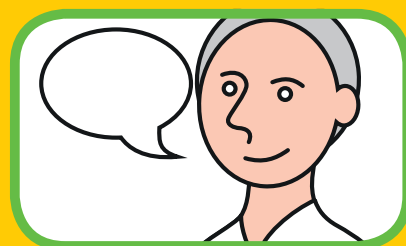
DO guide gently from danger



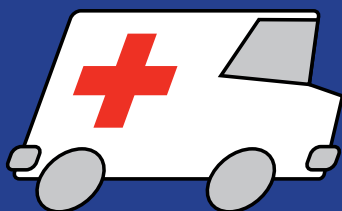
DO calmly reassure



DO stay until seizure ends



DO explain what happened



### When to call an ambulance

- If the seizure is longer than 5 minutes
- If the person has more than one seizure
- If you know it is the person's first seizure
- If the person is injured
- If you are in any doubt



249 Crumlin Road, Dublin 12.  
T: 01 4557500. [info@epilepsy.ie](mailto:info@epilepsy.ie)  
[www.epilepsy.ie](http://www.epilepsy.ie)  
[facebook.com/epilepsy.ie](https://www.facebook.com/epilepsy.ie)  
[@epilepsyireland](https://twitter.com/epilepsyireland)